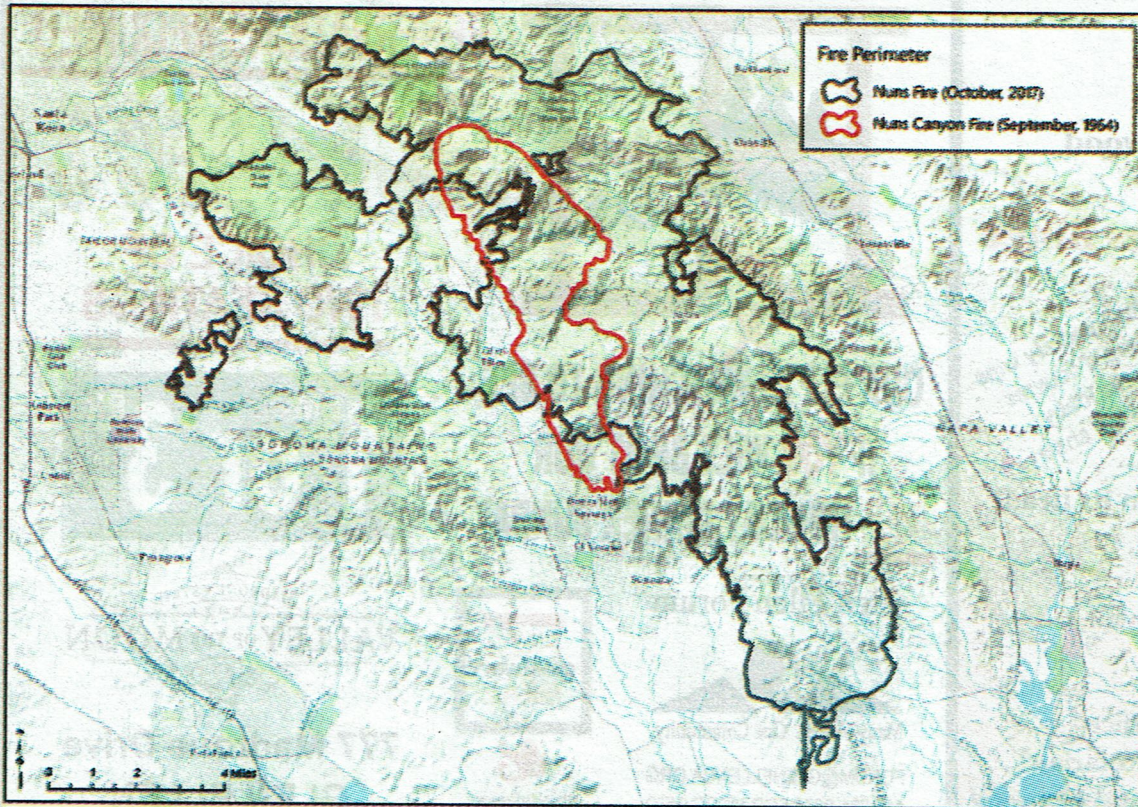


History repeats itself



Fire Perimeters: Nuns Fire (2017) & Nuns Canyon Fire (1964)



County of Sonoma
Permit and Resource Management Department
2576 Van Ness Avenue, San Francisco, California 94132



A side by side comparison of the areas burned during the 1964 Nuns Canyon Fire (red) and the Nuns Fire in October 2017 (black). The Nuns Canyon Fire, part of the catastrophic 1964 fire siege in Sonoma County, burned 9,808 acres, of which 8,018 were located within the 2017 Nuns Fire footprint. The Nuns Fire started on October 8, 2017 in Napa and Sonoma counties, and burned a total of 56,556 acres. The Nuns incident has a well-documented fire history, with approximately 15,164 acres (27 percent of the area) having been previously burned within the fire perimeter since 1951.

510 december 1, 2017 kenwood press